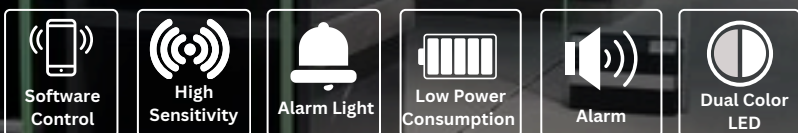


XG-AM6011 Acrylic AM System



Enhance Retail Security with an Elegant Design

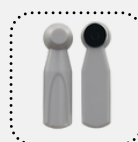
The XG-AM6011 Acrylic AM System is an innovative solution designed for modern retail environments, combining high-end aesthetics with exceptional performance. Its transparent, rimless design makes it a seamless addition to stores looking to protect their merchandise while maintaining a stylish look

Key Feature

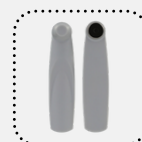
High-Quality Acrylic Design:	Transparent and rimless structure for a sleek, modern appearance.
Advanced Security Performance:	Ultra-long detection distance for effective merchandise protection.
Flexible Configurations:	Multiple antenna setups available: Mono (TRx), Dual (Tx + Rx), and Trio (Rx + Tx + Rx) for tailored security coverage.
Flexible Configuration Options:	Multiple antenna setups: Mono (TRx), Dual (Tx + Rx), and Trio (Rx + Tx + Rx).
Efficient and Reliable:	Low power consumption with stable performance across all antennas.
Remote Control and Integration:	Easily configurable via PC browser or mobile app.



Consumables Electronic Tags



AM Midi Pencil:
Detection range
of 1.7 meters.



AM Large Flat Pencil:
Detection range of 2.4
meters.



AM Label: Detection
range of 1.7 meters.



AM Self-alarm Tag
Detection: 2.4m



AM Self-alarm Tag
Detection: 2.4m

Deactivator



Deactivator



Detacher



Detacher



Sleek and Modern Design

Transparent acrylic body with customizable LED lighting enhances store aesthetics.

Superior Detection Performance

Long detection range and advanced signal processing ensure accuracy and reliability.



Flexible Configurations

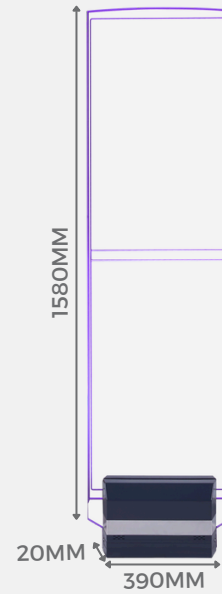
Supports Mono, Dual, and Trio antenna setups to suit diverse store layouts.

Versatile Applications

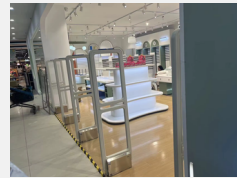
Ideal for retail environments like boutiques, supermarkets, and electronic stores.



Dimension



Application



Retail Stores



Supermarkets and Hypermarkets



Electronics Outlets

Specification

Model Number:	XG-AM6011
Frequency:	58 KHz
Material & Frame Color:	Transparent Acrylic
Dimensions:	1580 x 390 x 20 mm
Detection Range:	1.7 – 2.6 meters (between antennas)
Channel Coverage:	3.4 – 5.0 meters (dual antennas)
Power Supply:	24V, 3A
Power Consumption:	30W per antenna
Operating Voltage:	110 – 220V AC
Weight: Net:	16 KG (Net) / 21 KG (Gross)
Temperature Range:	-5°C to 50°C

