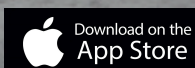


XL-885 Smart Door Lock System



Smart Door Lock System

The XL-885 Smart Door Lock is a high-security, multi-access door lock designed with advanced technology for both residential and commercial applications. It supports face recognition, fingerprint, RFID, password, mobile app, remote, and mechanical key access for ultimate convenience and security.

Key Features

Multi-Access Options:	Face recognition, fingerprint, RFID, password, mobile app, remote, and mechanical key access.
Quick Recognition:	Face and fingerprint recognition with <0.5-second response time.
HD Display:	3.5-inch high-definition screen for clear visuals and easy interaction.
Durable Construction:	Built with premium aluminum alloy and IML process for durability and style.
Long Battery Life:	Equipped with a 4200mAh lithium battery and USB emergency power supply.

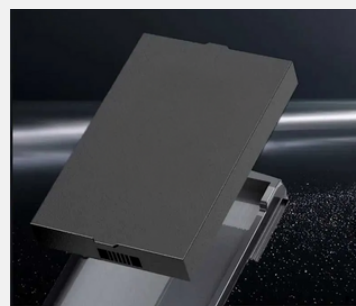


Anti Pick Alarm

Real time detection for alarms at all times and all day and night

Automatic Snapshot

When a person is detected, the photo will be automatically captured and uploaded to the mobile app.



Lithium Battery (4200MA)

Stable and long-lasting battery life, up to 180 days on a single charge.



Sleek black

Modern grey

Luxurious bronze



Effortless Entry with Face Recognition

Quick, secure access with advanced anti-spoofing technology.

Reliable Fingerprint Access

High-speed recognition for fast, seamless entry.



Convenient RFID Access

Card-based entry for authorized users without PINs.

Secure Password Entry

Personal PIN codes for added security and flexibility.



Remote Access via Mobile App

Control access and monitor entry in real-time from your smartphone.

Remote Control Access

Effortlessly unlock doors from a distance, granting entry with just a click of the remote.



Dimension



Application

- Residential Security: Ideal for modern home entry with high-security needs.
- Office Access: Effective for secure entry in corporate settings.
- Institutions: Suitable for schools, hospitals, and other facilities needing multi-user access.

Specification

Model Number:	XL-885
Unlock Methods:	Face, Fingerprint, RFID Card, Password, Mobile App, Remote, Mechanical Key
Response Time:	<0.5 seconds
Screen:	3.5-inch HD display
Battery:	4200mAh lithium battery, USB emergency power (5V)
Material:	Aluminum alloy with IML process
Lock Body:	International mechanical lock body
Capacity:	Fingerprints: 100 sets, Passwords: 100 sets, RFID Cards: 100
Door Compatibility:	Suitable for 40-120mm door thickness
Dimensions:	71x435mm (2.8x16.5 inches)