



**XTREME**  
GUARD

# XL-137

## Dead Bolt Lock

## Dead Bolt Lock for Frameless Glass Door

The XL-137 is a durable, energy-efficient lock for frameless glass doors, designed for 90°-180° open metal or wooden doors. It features a microcontroller for reduced power consumption, over 500,000 mechanical cycles, adjustable lock delay (0-3 seconds), push-button control, and a lock status indicator for enhanced security and performance.

### Key Feature

Wide Compatibility:	Suitable for frameless glass doors and 90°-180° hollow metal or wooden doors.
Energy-Efficient Design:	Microcontroller reduces power consumption to 210mA after door positioning.
Durable Performance:	Mechanical lifespan of over 500,000 cycles, ideal for high-traffic areas.
Adjustable Lock Delay:	Customizable delay time (0-3 seconds) for tailored security needs.
Push Button Control:	Integrated control for versatile operation.
Robust Construction:	Built for reliability and longevity in demanding environments.



### Securing Frameless Glass Doors

Ideal for offices, shops, and commercial spaces with glass door setups.

### Access Control Systems

Integrates seamlessly into access control setups for enhanced security.

### Energy-Efficient Applications

Suitable for environments requiring minimal power consumption with efficient lock mechanisms.

### High-Traffic Areas

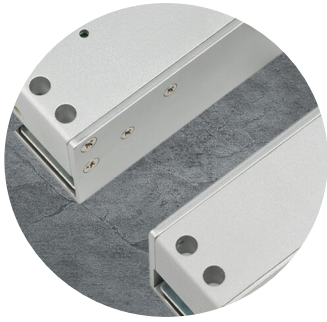
Perfect for doors in frequently accessed spaces, thanks to its durable mechanical life of over 500,000 cycles.

### Customizable Security Needs

Adjustable lock delay and push-button control make it versatile for various operational requirements.

### Real-Time Monitoring

Useful in scenarios requiring lock status indicators for better security management.



### Energy Efficiency

Low power consumption and heat generation ensure cost-effectiveness.



### Durable Construction

Designed for high-traffic areas with a long mechanical lifespan.



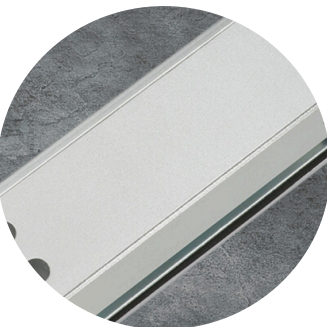
### Wide Compatibility

Suitable for various door types, including frameless glass doors.



### Real-Time Monitoring

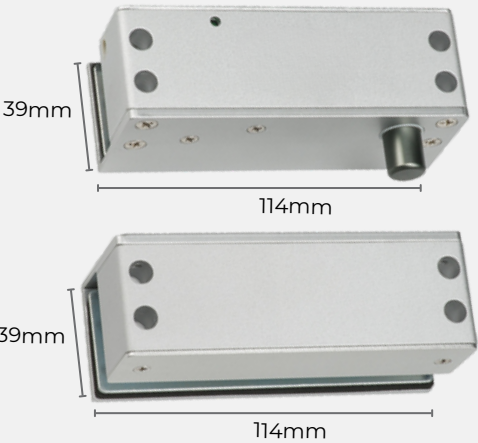
Integrated lock indicator for enhanced security and status tracking.



### Customizable Settings

Adjustable lock delay provides flexibility for different security needs.

## Dimension



## Application

- Frameless Glass Doors: Ideal for glass doors in offices, homes, and commercial spaces.
- Energy Efficient Security: Automatic current control reduces energy consumption, making it suitable for long-term use in high-traffic areas.
- Customizable Lock Timing: Adjustable lock delay settings for tailored security preferences.

## Specification

Model Number:	XL-137
Power Supply:	DC 12V $\pm$ 10%
Power Consumption:	<ul style="list-style-type: none"><li>• Standby: 210mA</li><li>• Operation: 570mA</li></ul>
Operating Temperature:	Max 45°C (at room temperature 30°C)
Operation Environment:	0°C to 70°C, up to 85% RH
Dimensions:	<ul style="list-style-type: none"><li>• Body: 114mm (L) x 46.7mm (W) x 39mm (D)</li><li>• Strike Plate: 113.5mm (L) x 46.7mm (W) x 39.2mm (D)</li><li>• Bolt: 14mm (Throw) x 12.7mm (Diameter)</li></ul>