



BR-180 Bracket

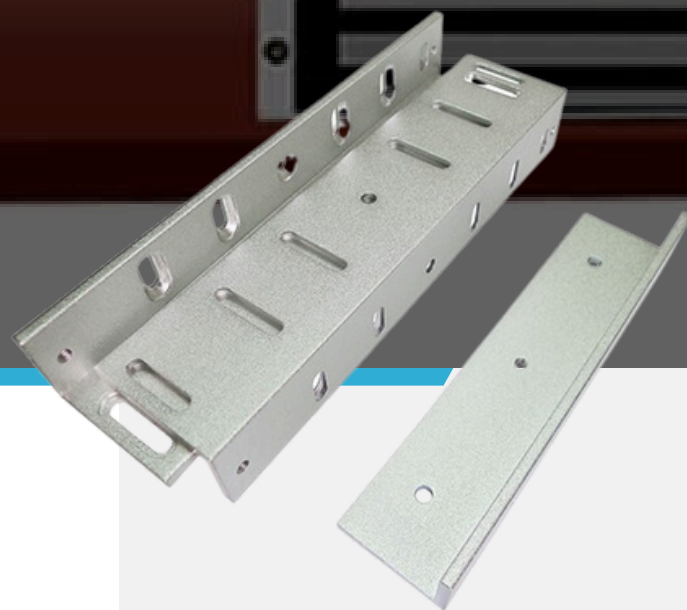
Secure Mounting for Electromagnetic Lock

The BR-180 Bracket is specifically designed for mounting the SL-180 Electromagnetic Lock on wooden or iron doors. Made from high-quality stainless steel, it ensures long-term durability and reliability.

The bracket set includes small and large "L" brackets, as well as an "F" bracket, allowing for versatile installation configurations on in-swing doors.

Key Feature

Material:	High-grade stainless steel construction for enhanced durability and longevity.
Versatile Mounting:	Suitable for mounting on wooden or iron doors, providing flexibility in door types.
Compatible with XL-180 Electromagnetic Lock	Designed for doors with a thickness between 9mm and 12mm.
Customizable Installation:	Users can adjust the relative position of the brackets to fit the door's specific configuration.



Mounting XL-180 Electromagnetic Lock

Provides secure installation for the SL-180 Electromagnetic Lock on both wooden and iron doors.

In-Swing Door Applications

Designed for in-swing doors, ensuring proper alignment and stable lock positioning.

Flexible Installation

Allows users to adjust the bracket's position to fit the door's specific configuration and conditions.

Durable in High-Traffic Areas

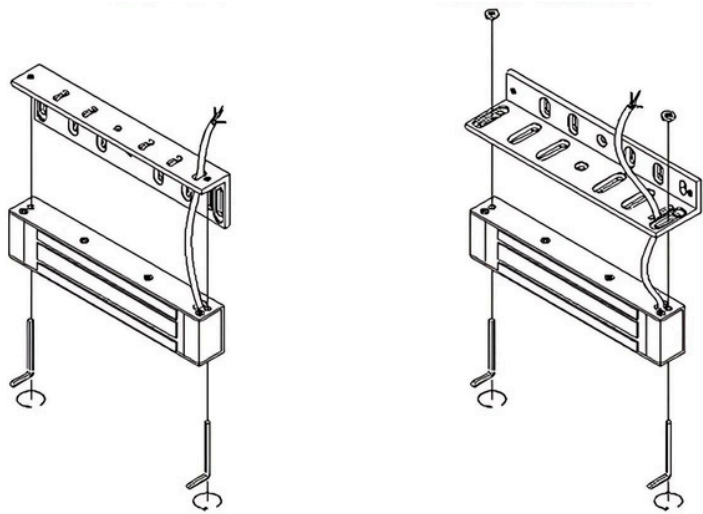
Ideal for commercial and residential doors that experience frequent use, offering long-lasting performance.

Versatile for Multiple Door Types

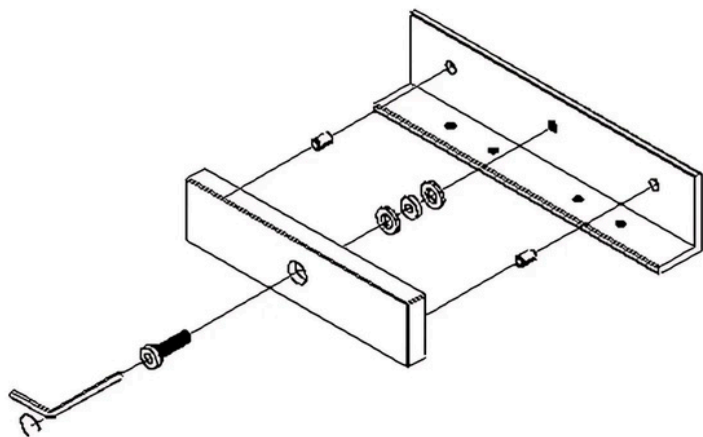
Compatible with a wide range of door materials, making it suitable for different installations.

Installation

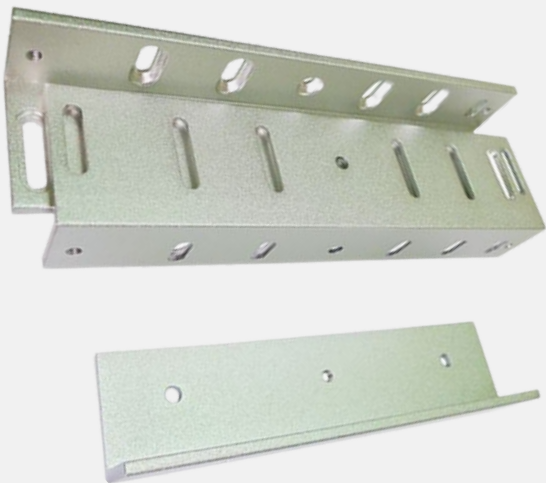
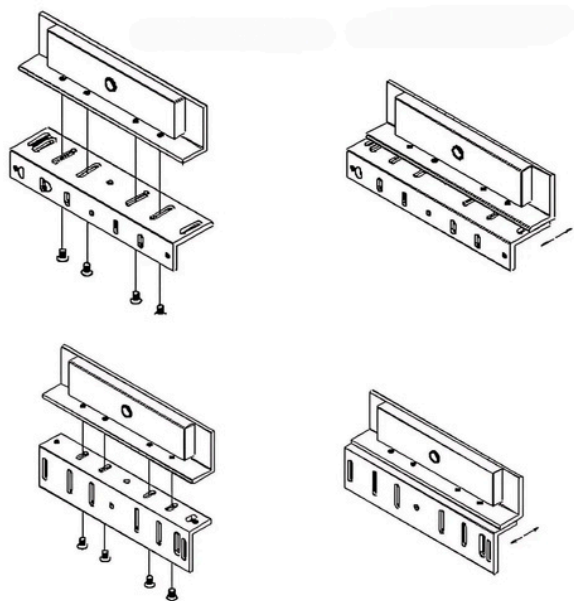
Install Method 1



Install Method 2



Install Method 3



Application:

- Wooden and Iron Door Mounting: Ideal for use on both wooden and iron doors, providing a secure and stable mounting surface for electromagnetic locks.
- In-Swing Door Installation: Designed for in-swing doors, allowing easy and secure installation of the SL-180 lock.
- Durable for High-Traffic Areas: The stainless steel construction ensures the bracket remains reliable in high-traffic environments, making it suitable for commercial and residential use.

Specification:

Model Number:	BR-180
Small "L" Bracket Dimensions:	168mm (L) x 40mm (W) x 25mm (D)
Large "L" Bracket Dimensions:	168mm (L) x 40mm (W) x 25mm (D)
"F" Bracket Dimensions:	168mm (L) x 40mm (W) x 25.5mm (D)