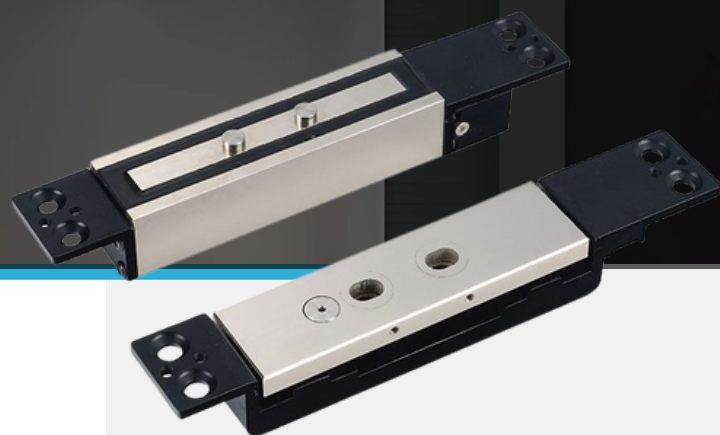


XL-500 Shear Lock



Comprehensive Locking Solution for High-Security Applications

The XL-500 Shear Lock is a versatile and high-performance locking solution designed for a wide range of door applications. It combines advanced electromagnetic technology and robust construction to deliver superior holding force and reliability. With its compact design and adjustable features, it is ideal for both aluminum and wooden doors with 90° or 180° opening angles.

Key Feature

High Holding Force:	Provides a maximum shear force of 1200 kg (2600 lbs), ensuring strong and secure locking.
Fireproof Materials:	All components are made of fireproof materials for enhanced safety.
Compact Design:	All-in-one design allows for easy installation
Built-In Microcontroller:	Offers door open delay time and position detection outputs for precise control.
Automatic Relocking:	Repeated locking function, with up to 60 automatic retries if the door is not correctly positioned.
Adjustable Power Supply:	Operates on 12V or 24V DC with auto-adjusting capabilities.
Fine Adjustment Mechanism:	Two long locking holes for precise alignment during installation.

Fire Door Security

Provides secure and fireproof locking for fire-rated doors, enhancing safety and compliance

Access Control in Commercial Buildings

Ideal for offices, warehouses, and retail spaces requiring reliable and robust security solutions.

Residential Applications

Ensures high-level security for homes, particularly for main entrances and high-risk areas.

Swing Door Compatibility

Suitable for both 90° and 180° in-swing and out-swing doors, offering flexibility for various door setups.

Multi-Door Management

Perfect for environments needing precise locking and access control for multiple doors in a single system.

Emergency Exits

Ensures secure locking while maintaining functionality for emergency exit doors with fireproof materials.



Durable Metal Lock Body

The Shear lock is made of integral profile precision casting, and the lock body has stronger protection making it safer

Adjustable Delay Locking

The shear lock offers adjustable delay locking (0, 3, 6, 9 seconds), ensuring secure locking after the door closes, even in scenarios with door vibrations.



Real-Time Door Status

Provides door status detection with NO, NC, and COM signal output for intelligent daily door control.



Compact Design for Narrow Frames

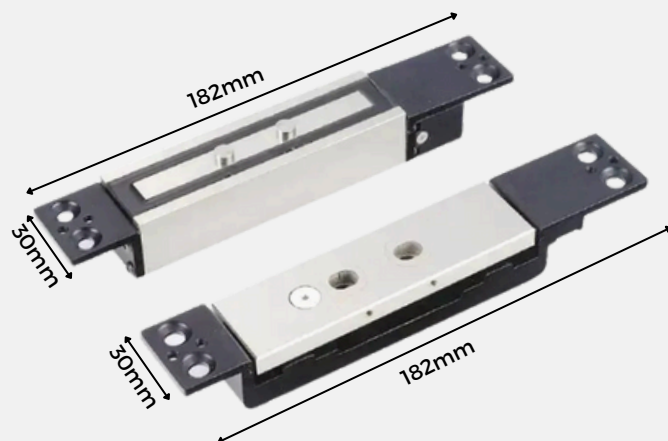
The shear lock adopts an integrated miniaturization design, making it easy to install and can be used safely and reliably on any material of door frame.



1200kg Shear Force Magnetic Force

The Shear lock employs electromagnetic attraction and bolt design, achieving a shear force of 1200kg for enhanced safety in access control systems.

Dimension



Application

- Fire Doors: Provides secure locking for fire-resistant doors.
- In-Swing and Out-Swing Doors: Suitable for a variety of door configurations.
- Commercial and Residential Buildings: Ideal for high-security applications in offices, warehouses, and homes.

Specification

Model Number:	XL-500
Power Supply:	12V/24V DC (auto-adjusting)
Operation Current:	450mA @12VDC / 235mA @24VDC
Holding Force:	1200 kg (2600 lbs)
Lock Status Output:	N.O. / N.C. (Contact Rating: 1A@30VDC / 0.5A@125VAC)
Delay Time:	Adjustable between 0-12 seconds
Dimensions:	<ul style="list-style-type: none">• Body: 182 mm (L) x 30 mm (W) x 25 mm (D)• Armature: 182 mm (L) x 30 mm (W) x 23.6 mm (D)
Weight:	1200g
Operating Environment:	<ul style="list-style-type: none">• Temperature: 0-90°C• Humidity: Max 85% Rh
Certification:	CE