

XL-148 Shear Lock

Robust Electric Strike Lock for Reliable Door Security

The XL-148 Strike Lock is a high-performance electric strike designed for seamless integration with mechanical locks. Featuring a durable stainless steel construction and advanced electromagnetic technology, it ensures reliable security, superior holding force, and a sleek embedded design. Ideal for wooden, metal, and PVC doors, it provides a professional solution for both residential and commercial applications.

Key Feature

Electric Strike with Long Front Plate:	Suitable for various door materials, including wood, metal, and PVC.
Fail Secure Operation:	Locks automatically during power interruption, ensuring continued security.
High Holding Force:	Supports up to 500kg retention for enhanced security.
Tested for Reliability:	Certified for 100,000 cycles, ensuring long-lasting performance.
Voltage and Consumption:	Operates at 12V DC with a consumption of 200mA
Lock Status Monitoring:	NO (Normally Open) lock status output for real-time status monitoring.
Weather Resistant:	Designed to operate within a temperature range of -10°C to +55°C and humidity levels of 0% to 90% (non-condensing).



Residential Door Security

Provides robust locking for entry points in homes and apartments, ensuring safety and convenience.

Commercial Applications

Ideal for securing office doors, retail entrances, and storage areas with high holding force.

Residual Magnetism-Free

Advanced electromagnetic technology prevents residual magnetism, ensuring smooth and consistent operation.

Wide Compatibility

Suitable for wooden, metal, and PVC doors, providing versatility in various applications.

Embedded Installation

Sleek and seamless design with embedded mounting for an aesthetically pleasing appearance.

90-Degree Door Opening Support

Allows doors to open at a 90-degree angle for added convenience.



Adjustable Narrow Type Electric Strike

The electric lock must be used in conjunction with the mechanical lock

High Strength All Gold Lock Body

The lock body is made of high-strength zinc alloy, and the panel adopts a wire drawing process, which is beautiful and durable.



Zinc alloy Polished Tongue

The surface of the lock tongue is polished and nickel-plated, and the thrust is 800kg. The lock tongue is specially designed, the distance can be adjusted

Embedded Installation

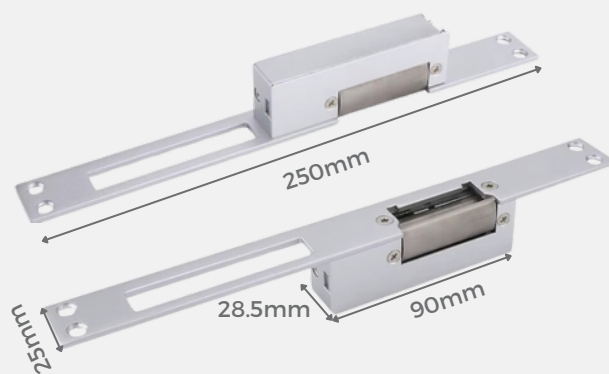
Safe design to prevent external malicious lock slot from being forced open.



Applicable Door Type

Wooden door, metal door, PVC door

Dimension



Application

- Residential Security: Ideal for securing entry points in homes and apartments.
- Commercial Doors: Ensures robust locking for offices, retail spaces, and warehouses.
- Industrial Use: Suitable for high-security environments requiring impact-resistant locks.

Specification

Model Number:	XL -148
Type:	Electric door opener with long front plate
Compatibility:	Suitable for wooden, metal, and PVC doors
Holding Force:	Up to 500kg retention
Operation Mode:	Fail Secure (locks upon power interruption)
Lock Status Output:	NO (Normally Open)
Voltage:	12V DC
Operating Temperature:	-10°C to +55°C
Operating Humidity:	0% to 90% (non-condensing)
Dimensions:	250mm (L) x 25mm (W) x 31mm (D)