

XL-136

Dead Bolt Lock

Reliable and Energy-Efficient Locking Solution

The XL-136 Dead Bolt Lock is a versatile and durable locking solution, designed for 90° to 180° hollow metal or solid wooden doors. Featuring a built-in microcontroller for energy efficiency and a robust mechanical design, it is ideal for secure access control in various environments.

Key Feature

Energy Efficiency:	Built-in microcontroller automatically reduces current to 210mA after 6 seconds, minimizing power consumption and heat generation.
High Durability:	Special wearable design ensures a mechanical life of over 500,000 cycles, providing long-term reliability.
Adjustable Lock Delay:	Offers a delay time of 0 to 3 seconds, adjustable to meet specific security requirements.
Push Button Control:	Includes a set of push-button control contacts for convenient operation.
Lock Status Indicator:	Equipped with a lock indicator for real-time monitoring of lock status.
Wide Compatibility:	Suitable for 90° to 180° hollow metal or solid wooden doors, offering flexibility across various applications.

Secure Access Control

Provides reliable locking for entrances in offices, residential properties, and commercial spaces.

Emergency Exit Systems

Adjustable lock delay ensures secure locking while allowing safe escape during emergencies.

Energy-Efficient Applications

Designed for low power consumption and heat reduction, ideal for sustainable systems.

Wide Door Compatibility

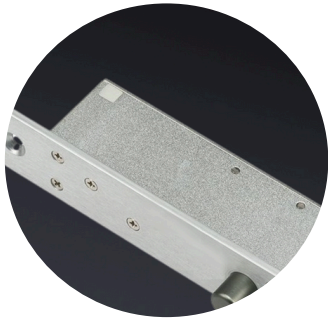
Suitable for 90° to 180° hollow metal and solid wooden doors, making it versatile for various installations.

High-Traffic Areas

Durable design supports over 500,000 mechanical cycles, perfect for frequently used doors

Monitoring and Control

Features a lock status indicator and push-button control for integration with access management systems.



Compact and Space-Efficient

The compact design allows for easy installation in tight spaces without compromising on security.

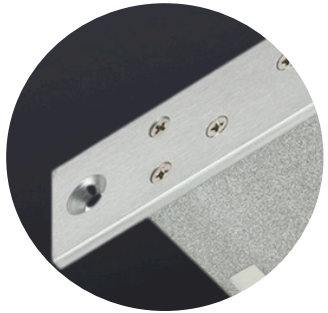
Energy Efficiency

The built-in microcontroller reduces current to 210mA after 6 seconds, minimizing power consumption and heat generation, making it eco-friendly and cost-effective.



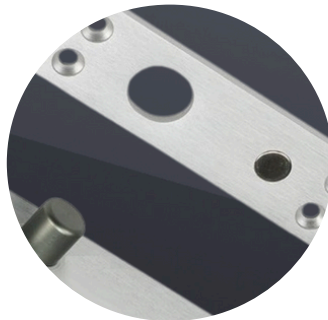
Customizable Lock Delay

Adjustable delay settings (0 to 3 seconds) provide flexibility to adapt to various security requirements.



Enhanced Security with Strong Bolt

A 14mm throw bolt with a 12.7mm diameter offers robust locking to prevent unauthorized access.

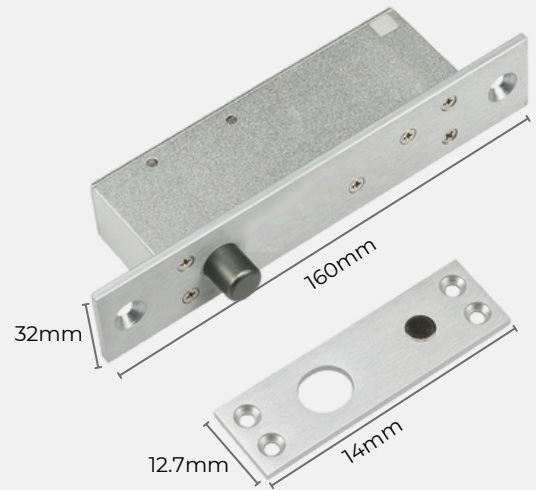


Versatile Door Compatibility

60 KG to 500 KG, suitable for different environments. Equipped with many functions to choose from.



Dimension



Application

- High-Security Doors: Ensures robust locking for entrances in offices, residential properties, and commercial spaces.
- Emergency Exit Solutions: Adjustable lock delay facilitates safe and secure egress in emergencies..
- Energy-Efficient Systems: Ideal for applications prioritizing low power consumption and heat management.

Specification

Model Number:	XL-136
Power Supply:	DC 12V \pm 10%
Operation Current:	830mA \pm 10%
Holding Current:	160mA \pm 10%
Relock Function:	Available (auto relocking within 6 seconds)
Door Position Sensor:	N.C. & N.O.
Mechanic Life:	Over 1,000,000 operations
Overload Current Protection:	Built-in
Operation Temperature:	0~90°C; Humidity 85%Rh max
Dimensions:	<ul style="list-style-type: none">• Body: 160mm(L) x 25mm(W) x 34.5mm(D)• Strike plate: 90mm(L) x 23mm(W) x 2.5mm(D)• Bolt: 16mm(Throw) x 12.7mm(Diameter)