

XL-120B

Drop bolt lock with key



High-Security Dead Bolt Lock

The XL-120B is a fail-secure deadbolt lock designed for 90°–180° doors, featuring robust stainless steel construction for enhanced security. Ideal for high-security environments, it integrates a built-in microcontroller for power efficiency and precise operation.

Key Feature

Fail-Secure Operation:	Lock engages when power is off for added security.
Strong Durability:	Stainless steel bolt withstands over 1000kg of shear force
High Efficiency:	Reduces power consumption after door positioning to minimize heating..
Adjustable Delay Timer:	Configurable locking time (0–9 seconds).
Long Lifespan:	Mechanically tested for over 500,000 cycles.
Emergency Access:	Built-in oval cylinder for manual unlocking during emergencies.

High-Security Applications

Ideal for securing entrances in offices, homes, and commercial spaces.

Emergency Exit Solutions

Suitable for doors requiring manual unlocking during power outages.

Fireproof Doors

Provides fail-secure locking for doors in environments with stringent fire safety regulations.

Durable Door Locking

Compatible with 90°–180° hollow metal or solid wooden doors, ensuring wide usability.

Access Control Integration

Works seamlessly with door access control systems for secure entry and exit..

Commercial and Residential Security:

Provides enhanced locking for doors in high-security environments.



Electric Drop Bolt Lock

After the power failure ,the mechanical key can be opened in emergency

High Quality lock Cylinder

After the power failure, the mechanical key can be opened in an emergency.



Metal Lock Body

High Quality Stainless Steel Material



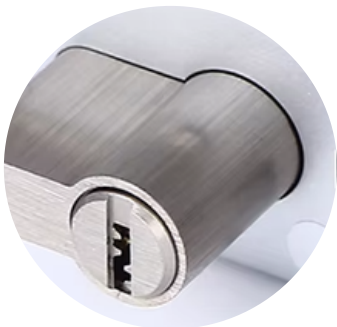
Thicken Bolt

The bolt is thickened, sturdy and durable

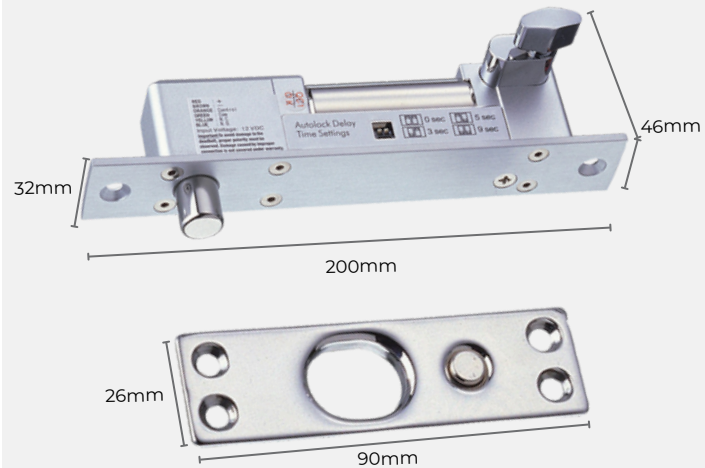


High Quality Lock Cylinder

After the power failure the mechanical key can be opened in emergency



Dimension



Application

- High-Security Doors: Ideal for offices, residential, and commercial spaces.
- Emergency Exits: Provides reliable locking with manual override for emergencies.
- Door Compatibility: Suitable for hollow metal or solid wooden doors.

Specification

Model Number:	XL-120B
Dimensions:	<ul style="list-style-type: none"> • Body: 200mm (L) x 32mm (W) x 46mm (D) • Strike Plate: 90mm (L) x 26mm (W) x 2.5mm (D) • Bolt: 17mm (Throw) x 15.5mm (Diameter)
Operation Temperature:	0°C to 90°C
Humidity:	Up to 85% RH max
Unlock Time Delay:	Options to set at 0/2.5/5/9 seconds
Door Thickness:	Suitable for door leaf width of up to 50 mm.