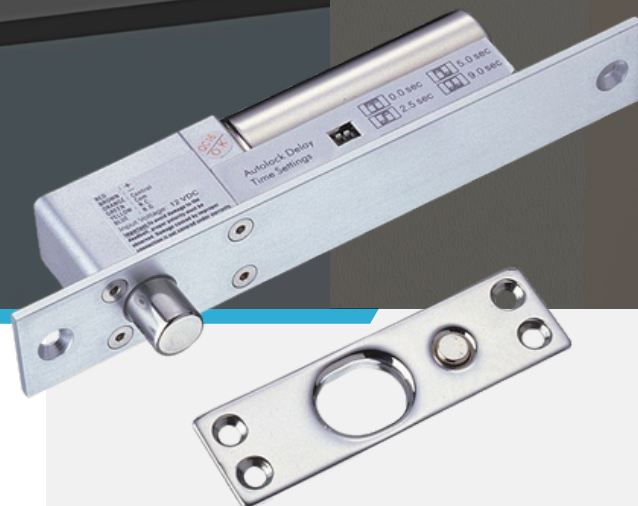


XL-100A Dead Bolt Lock



Robust and Reliable Dead Bolt Lock

The XL-100A Dead Bolt Lock is a high-security access control device designed to provide reliable and durable locking for a wide range of door systems. It features a fail-safe design with built-in surge protection (MOV) to prevent malfunction and maintain security in case of power surges.

The lock is equipped with advanced microcomputer-controlled door position detection and current control, ensuring efficient operation and reducing the likelihood of errors while maintaining a low operating temperature.

Key Feature

Built-in Door State Detection:	Integrated door open/close detection output point with a 250mA capacity for N.C. (Normally Closed) and N.O. (Normally Open) circuits.
Durable Design:	Specially designed for wear resistance, offering a mechanical life of over 1,000,000 cycles, ensuring long-term reliable performance.
Fail-Safe Operation:	Fail-safe type lock with MOV surge protection, ensuring security and power efficiency.
Advanced Control:	Microcomputer-controlled door position detection and current control help prevent errors and reduce the lock's operating temperature.
High Shear Force Resistance:	Stainless steel bolt can withstand more than 1,000 kg of shear force, offering enhanced security.
Customizable Lock Delay:	Door lock delay time settings available for 0, 2.5, 5, or 9 seconds, providing flexibility for user needs.

Residential Security

Can be used in high-end residential properties for enhanced door security. Provides protection against unauthorized access with customizable lock delay settings.

Office Building Entrances

Suitable for office doors that require electronic access control and automatic re-locking features. Ensures door security with door state detection and automatic re-locking within 5 seconds.

Fail-Safe Access Solutions

Perfect for emergency exits, as the lock disengages during power failures, providing a safe escape route.

Versatile Compatibility

This electric bolt lock is suitable for a variety of door types, including glass, wooden, metal, and fireproof doors.

Robust Construction

Built with a durable stainless steel bolt with a 16mm diameter and a 16mm throw, ensuring security.



Stainless Steel Lock Bolt

Turn on the power-off circuit design. Once the power is off, the bolt will automatically bounce back.

Plum Blossom Screw Fixation

Plum blossom screws are fixed to reduce potential safety hazards



Photoelectric Control Technology

The power consumption of the plug lock is reduced, and it has the real ultra-low temperature function.

High Quality Copper Wire

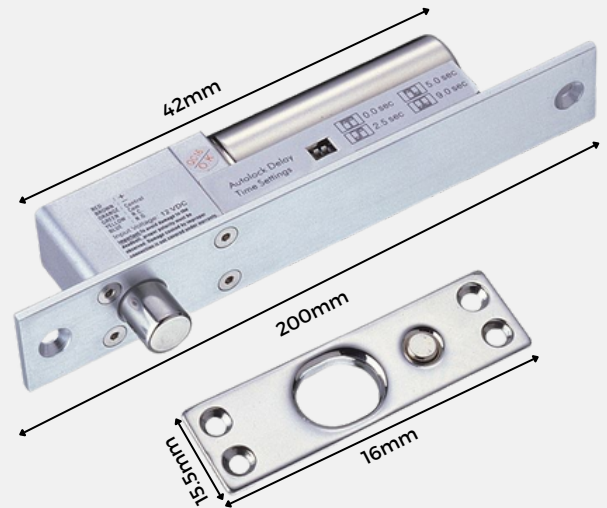
Continuous work is not easy to get hot, low-temperature protection.



Professional Electromagnetic Design

Ultra-low temperature, ultra-low power consumption design, 500,000 power-on aging design, safer and more durable.

Dimension



Application

- Access Control Systems: Provides reliable locking for offices, residential areas, and high-security zones.
- Emergency Exit Solutions: Ideal for controlled egress with adjustable delay functionality.
- Industrial Environments: Ensures robust performance in demanding conditions.

Specification

Model Number:	XL-100A
Dimensions:	<ul style="list-style-type: none"> • Body: 200mm (L) x 32mm (W) x 42mm (D) • Strike Plate: 90mm (L) x 26mm (W) x 2.5mm (D) • Bolt: 16mm (Throw) x 15.5mm (Diameter)
Operation Temperature:	0°C to 90°C
Humidity:	85%RH max
Shear Force:	More than 1000 kg