

BL-200 Door Handle Magnetic Lock

High-Performance Magnetic Lock for Secure Entrances

The BL-200 Door Handle Magnetic Lock is a durable security solution for 90° aluminum and wooden doors. It provides a strong holding force of 250kg (600lbs), prevents door deformation, operates independently without additional systems, and features adjustable lock delay settings, making it ideal for securing entrances in homes, offices, and commercial buildings.

Key Feature

Strong Holding Force:	Capable of holding up to 250kg (600lbs), providing robust security for doors in offices, homes, and commercial buildings.
Wide Compatibility:	Designed for 90° aluminum and wooden doors, ensuring flexibility in installation across various environments.
Prevents Door Deformation:	Installed at the center of the door leaf, maintaining the door's structural integrity and preventing warping during locking and unlocking operations.
Standalone Operation:	Operates independently of additional control systems like proximity readers, simplifying installation and operation.
Adjustable Lock Delay Timer:	Includes a built-in delay timer with 0/2.5/5/9-second settings for customizable security configurations.

High-Security Doors

Ensures robust locking for entrances in office buildings, residential properties, and commercial spaces.

Emergency Exits

Provides secure locking with adjustable delay settings, while ensuring easy escape during power failures.

Standalone Locking Systems

Ideal for installations without the need for proximity readers or additional control systems

Versatile Door Compatibility

Suitable for 90° aluminum and wooden doors, making it adaptable for various environments.

Monitoring Applications

Equipped with state detection output for monitoring door open/close status in security systems.



Enhanced Security Mechanism

Designed to withstand significant force, ensuring safety for high-risk environments like offices and homes.

Compact and Aesthetic Design

Sleek handle and body dimensions seamlessly blend with door aesthetics while offering superior functionality.



Ease of Installation

Simple mounting process suitable for 90° doors without requiring complex wiring or additional hardware systems.

Energy Efficiency

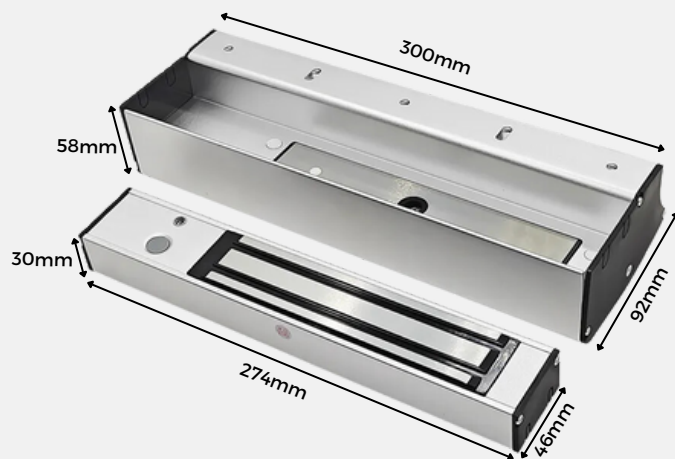
Operates with low power consumption, making it an eco-friendly choice for long-term use.



Flexibility in Power Supply

Compatible with both DC12V and DC24V power sources, allowing adaptability to existing setups.

Dimension



Application

- **High-Security Doors:**Ideal for securing doors in office buildings, homes, and commercial properties requiring high-level security solutions.
- **Emergency Exit Systems:**Ensures secure locking with adjustable delay functionality, while providing ease of escape during emergencies.

Specification

Model Number:	BL-200
Holding Force:	250kg (600lbs)
Power Supply:	DC12V or DC24V
Operation Current:	500mA @ 12V or 250mA @ 24V
Door Lock Delay Time:	0/2.5/5/9 seconds (adjustable)
Operating Temperature:	0°C to 60°C
Operating Humidity:	Up to 85% RH (non-condensing)
Dimensions:	Handle: 300mm (L) x 92mm (W) x 58mm (D) Body: 274mm (L) x 46mm (W) x 30mm (D)
Compatible Doors:	90° aluminum or wooden doors