

# XG-AM7011

## Concealed Antennas



## Concealed Antenna for Secure Tracking

The EAS AM Concealed System offers a discreet and effective solution for retail security. Constructed from durable PVC foam material, it combines advanced software-driven technology with excellent interference resistance and intuitive diagnostics, making it ideal for various store environments.

### Key Feature

Exceptional UHF Performance:	Powered by Impinj E710/R2000 module, offering industry-leading read rates and tag handling.
Advanced System Configuration:	Android 11 OS, octa-core processor, and optional memory capacities for seamless operation.
Robust and Durable Design:	Designed for durability with IP65 sealing, multiple drop specs, and hot-swappable batteries.
Versatile Data Collection:	Supports 1D/2D barcode scanning, NFC, and optional fingerprint recognition.
Superior Connectivity:	Equipped with WiFi (2.4G/5G dual-band), Bluetooth 5.0, and VoLTE support for efficient communication.
Long-Lasting Power:	Comes with a 6700mAh removable battery and an optional 13400mAh pistol grip battery for extended usage.



### Aesthetic Design

Concealed installation maintains store aesthetics and optimizes space utilization.

### High Detection Accuracy

Advanced system detects 58kHz tags with sensitivity up to 2 meters, ensuring reliable theft prevention.

### Strong Anti-Interference

Self-developed mainboard resists external interference for stable performance.

### Remote Diagnostics

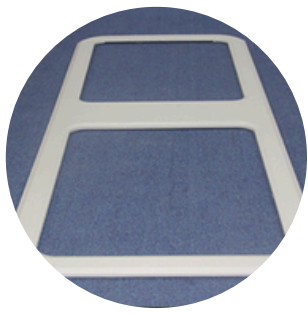
Allows real-time monitoring, debugging, and repair, minimizing downtime.

### Universal Installation

Compatible with various floor materials, providing flexibility for different store layouts.

### Durable Material

Constructed with PVC foam for long-lasting and robust performance.

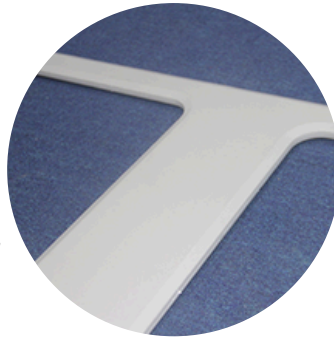


## High-Performance ABS Design with Anti-Interference

Using ABS material injection molding, high detection rate, low false alarm and false report performance, good anti-interference

## Discreet Installation for Aesthetic and Security

To convert a system means installing it discreetly under the exit carpet, preserving the store's aesthetics while providing anti-theft protection, catering to shopkeepers' needs for both appearance and security.



## Robust ABS with High Durability and Corrosion Resistance

ABS package ,1.2 tons of bearing pressure ,metal foil sheilding ,wider protection surface ,corrosion resistance and humidity



## Detection

Detects 58kHz tags with a range up to 2 meters for hard tags.



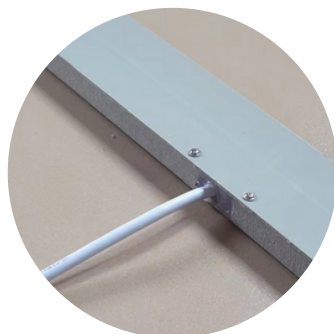
## Design

Concealed installation for enhanced aesthetics and space optimization.



## Anti-Interference

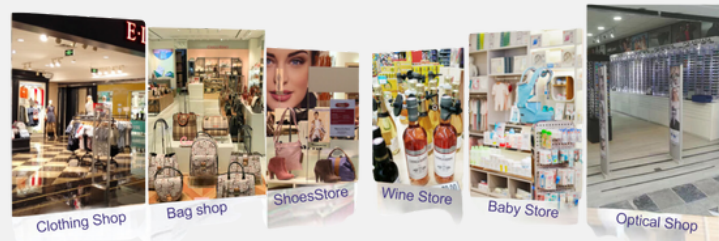
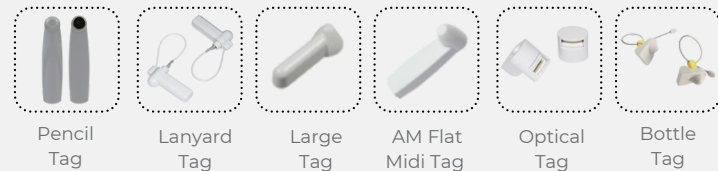
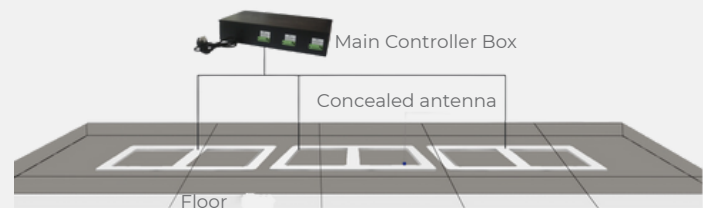
Strong resistance to interference, ensuring reliable performance.



## Dimension



## Installation Diagram



## Specification

Model Number:	XG-AM7011
Frequency Range:	Wide-band (specific ranges customizable)
Polarization:	Linear or Circular
Detection Range:	Up to 10 meters (depending on setup)
Material:	Weather-resistant, rugged materials
Dimensions:	1500x600x20mm
Operating Temperature:	-40°C to +85°C
Connectivity:	Compatible with universal tracking systems