

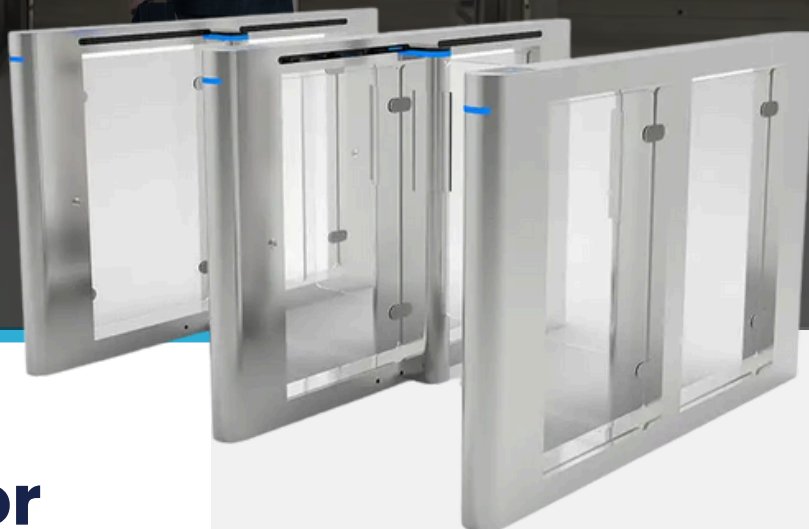
XSB-568S Speed Gate

Premium Access Control Solution for Modern Entrances

The XSB-568S Speed Gate is an elegant and reliable entrance solution designed for modern security requirements in corporate buildings, factories, schools, and gyms. Its compact design features a slim 12cm cabinet width and a luxurious stainless steel finish, complemented by a smooth and silent DC brushless motor. Modular construction allows easy installation, maintenance, and integration with third-party systems.

Key Feature

Compact and Elegant Design:	Slim 12cm cabinet width combined with 140cm length offers a modern, luxurious appearance.
High-Quality Construction:	Solid stainless steel cabinet with durable acrylic barriers ensures long-term performance.
Smooth and Silent Operation:	Optimized DC brushless motor provides quiet barrier movement with extended lifecycle.
Advanced IR Sensor System:	Detects different walking modes for precise control and safety.
Easy Installation and Maintenance:	Modular design allows simple setup and efficient servicing.
Customizable Lane Width:	Adjustable lane width ranging from 600mm to 900mm for flexibility in various environments.



Sophisticated Aesthetics

Slim-profile design with stainless steel cabinet and acrylic barriers complements modern architectural styles.

Weatherproof Reliability

Engineered for indoor and outdoor use, maintaining peak performance in challenging conditions.

Efficient Motor Mechanism

Features a DC brushless motor for consistent, energy-efficient, and low-maintenance operation.

Enhanced Safety Measures

High-precision IR sensors ensure accurate detection and prevent unauthorized access.

Versatile Lane Options

Customizable lane widths (600mm–900mm) adapt to various pedestrian traffic scenarios.

Quick Installation and Repairs

Modular design with onboard testing tools ensures minimal downtime.



Solid Cabinet

- Solid stainless steel cabinet, elegant and luxury design
- High quality Acrylic barrier

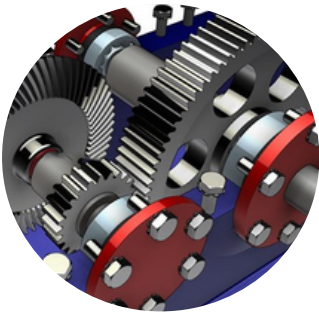
DC Brushless Motor

- Improved life cycle using DC brushless motor compared with the normal DC motor with brush
- Speed of the barrier opening or closing is perfectly controlled



Improved Mechanism

- The mechanism is simple compared to traditional design, the life cycle increase
- The noise of movement is optimized obviously using the latest mechanism



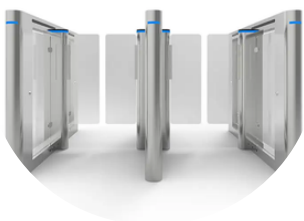
Reliable and Powerful Board

- Fast and easy setting by numeric display
- Easy installation between master and slave board
- Small LED show the status of the device clearly
- Testing keypad on board

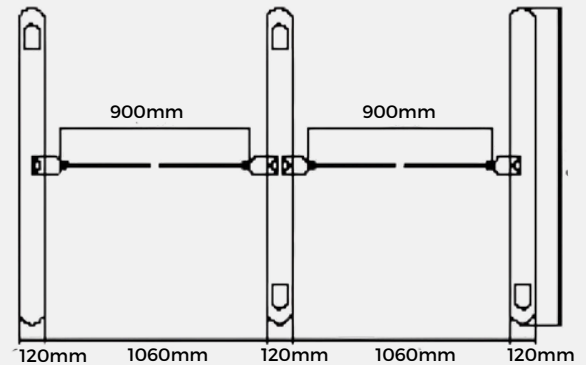
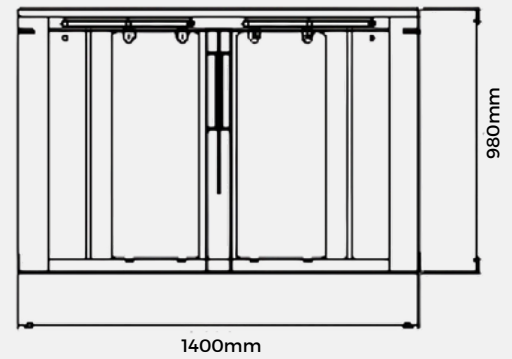


Advanced Safety with High-Precision IR Sensors

Highly reliable with advanced IR sensors for enhanced safety.



Dimension



Application

- Corporate Offices: Enhances controlled access for employees and visitors.
- Schools and Universities: Provides safe and efficient access control for staff and students.
- Factories and Warehouses: Secures restricted entry points in industrial environments.

Specification

Model Number:	XSB-568S
Power Requirements:	AC110V/220V, 50/60Hz
Working Temperature:	-28°C to 60°C
Working Environment:	Indoor/Outdoor
Lane Width:	600mm - 900mm
Cabinet Material:	Stainless Steel
Lid Material:	Stainless Steel
Barrier Material:	Acrylic
Barrier Movement:	Swing
LED Indicator:	Yes
Security Level:	Medium