

# XSB-569S Speed Gate

## Elegant and Efficient Access Control Solution

The XSB-569S Speed Gate is an elegant and robust access control solution designed for modern entrance management. Featuring a compact 12cm cabinet width, stainless steel construction, and a smooth DC brushless motor mechanism, it combines aesthetics with superior performance. Ideal for factories, office buildings, schools, and gyms, the XSB-569S ensures seamless operation with minimal maintenance.

### Key Feature

Elegant Design:	Sleek 12cm cabinet width with a 140cm length for a luxurious look
Solid Construction:	High-quality stainless steel cabinet with durable acrylic barriers.
Smooth Operation:	DC brushless motor ensures silent and reliable barrier movement.
Long Life Cycle:	Optimized mechanism for increased durability and reduced wear.
Advanced Sensor System:	High-quality IR sensors detect multiple walking modes for precise control.
Easy Integration:	Modular design allows for seamless integration with third-party systems.



### Aesthetic Appeal

Combines a slim, modern design with luxurious materials.

### Silent and Reliable

Quiet DC motor operation minimizes disruptions while ensuring consistent performance.

### Durability

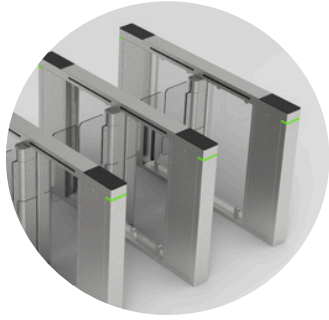
Built to withstand demanding environments with long-lasting components.

### Enhanced Safety

IR sensors provide secure access control and prevent unauthorized entry.

### Customizable and Adaptable

Adjustable lane widths and modular configurations suit various environments.



## Solid Cabinet

- Solid stainless steel cabinet, elegant and luxury design
- High quality Acrylic barrier

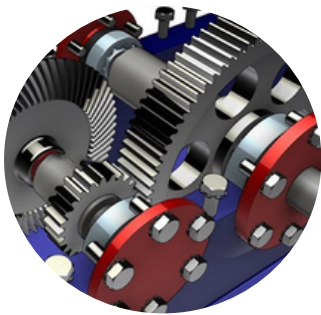
## DC Brushless Motor

- Improved life cycle using DC brushless motor compared with the normal DC motor with brush
- Speed of the barrier opening or closing is perfectly controlled



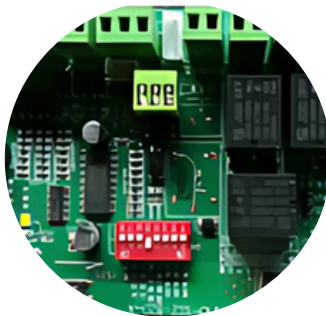
## Improved Mechanism

- The mechanism is simple compared to traditional design, the life cycle increase
- The noise of movement is optimized obviously using the latest mechanism



## Reliable and Powerful Board

- Fast and easy setting by numeric display
- Easy installation between master and slave board
- Small LED show the status of the device clearly
- Testing keypad on board

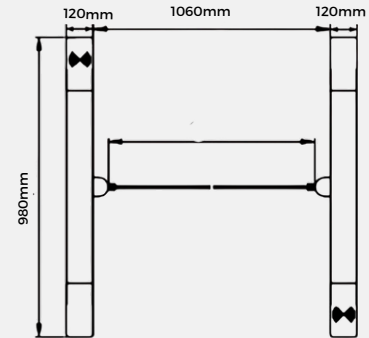
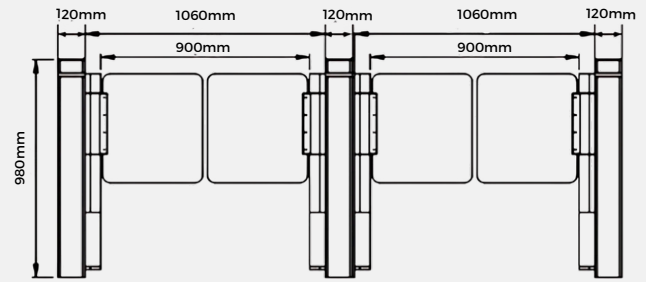


## Quiet and Smooth Mechanism

Minimal noise for a seamless user experience.



## Dimension



## Application

- Office Buildings: Provides controlled access for employees and visitors.
- Factories and Warehouses: Enhances security in high-traffic industrial environments.
- Schools and Universities: Ensures safe and efficient access management for students and staff.

## Specification

Model Number:	XSB-569S
Power Requirements:	AC110V/220V, 50/60Hz
Working Temperature:	-28°C to 60°C
Working Environment:	Indoor/Outdoor
Lane Width:	600mm - 900mm
Cabinet Material:	Stainless Steel
Lid Material:	Stainless Steel
Barrier Material:	Acrylic
Barrier Movement:	Swing
LED Indicator:	Yes
Security Level:	Medium