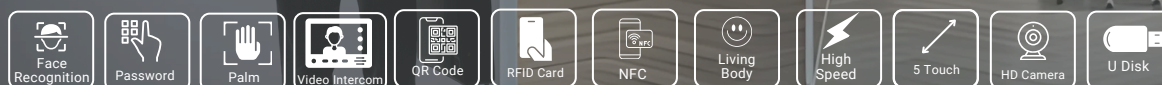


OX-945

Palm Vein, AI Facial Recognition & Cloud Based Access Control with Time & attendance Terminal

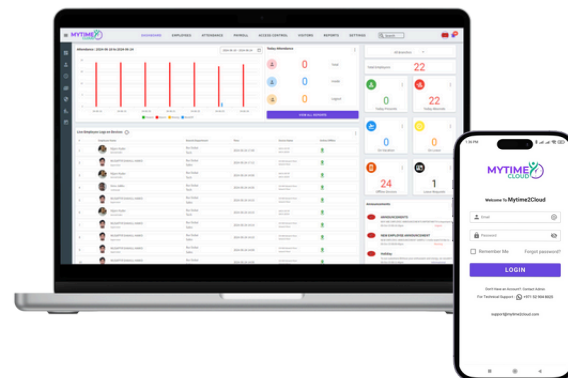


Facial Recognition Access control Device

The OX-945 is a high-performance access control terminal featuring multi-modal biometric authentication options, including palm vein recognition, facial recognition, and QR code verification. This device is ideal for secure environments requiring precise, fast, and adaptable access control.

Key Features

High Capacity:	Supports up to 20,000 face templates, 10,000 palm veins, and 1 million access records.
Multi-Modal Authentication:	Facial recognition, palm vein detection, QR code, NFC, RFID, and PIN options.
5-Inch HD Display:	High-resolution screen for clear and responsive user interaction.
Cloud & Local Management:	Offers cloud-based management for remote access control and attendance tracking.
Flexible Connectivity:	Supports TCP/IP, Wi-Fi, and optional 4G for versatile network integration.
Rugged Build:	Constructed with metal and tempered glass, suitable for heavy-use environments.



Software Features

- Cloud based / Web based Software
- Time Attendance and leave management
- Access Control and Time zone management
- Payroll management with WPS report
- Visitors management on premises and off premises
- Email , WhatsApp, SMS notification
- Absent report , Attendance report by email/WhatsApp
- Mobile application for android and iPhone
- Leave management and Leave approval
- Document expire alert by email /WhatsApp



Effortless Entry with Face Recognition

Quick, secure access with advanced anti-spoofing technology.

Touchless Access with Palm Recognition

Hygienic, secure access with advanced palm scanning.



Seamless Entry with RFID Card Recognition

Fast, convenient access using secure card technology.



Intelligent Elevator Access with Facial Recognition

Effortless, secure floor access with advanced facial recognition technology.



Quick Access with QR Code Scanning

Simple, efficient entry with QR code verification.

Video Intercom Support Direct Calling and Dial up calling Modes



Specifications

Face Capacity:	20,000
Palm Vein Capacity:	10,000
Record Capacity:	1 Million records
Display:	5-inch HD touchscreen
Compatibility:	Security Relay Box, Wiegand, RS485, RS232, NFC, RFID, Barcode (optional)
Standard Functions:	Access Levels, Groups, Holidays, DST, Duress Mode, Anti-Passback, Record Query, Custom Wallpaper & Screen Saver, Tamper Alarm
Access Control Interfaces:	Lock Relay, Alarm Output, Auxiliary Input, Exit Button, Door Sensor
Special Functions:	Live Body Detection, HTTPS Encryption (optional), Event Snapshot
Communication:	TCP/IP, Wi-Fi, RS485, RS232, optional 4G
Power:	DC 12V, <1300mA
Environmental:	Working Temperature: -30°C to 65°C Working Humidity: 10% to 90% RH
Hardware:	Multi-core Processor, 512MB RAM, 8GB Storage, WDR 2MP Camera, Presence Detection, Hi-Fi Audio
Dimensions :	180 x 87 x 23 mm
Net Weight:	0.6 kg
Installation Options:	Wall Mounted or Turnstile Installation

Cloud based Network



Connection Diagram

