

EX-201

Infrared No Touch Exit Button

Advanced Touch Free Access Control

The EX-201 Infrared No Touch Exit Button is a hands-free access control device designed for hygiene and convenience. It activates without physical contact, making it ideal for public areas.

Constructed from durable stainless steel with waterproof protection, it offers reliable performance indoors and outdoors. Its adjustable proximity range and door opening time provide flexibility and control.

Key Feature

Durable Design:	Made from SUS304 stainless steel, resistant to strong acids and alkali, ensuring long-lasting performance.
Touch-Free Activation:	Activates without physical contact to prevent disease contagion, ideal for public areas such as hospitals and restaurants.
Built-In Microcontroller:	Features a power-on self-testing function for reliable performance.
Waterproof Front Panel:	IP65-rated waterproof design suitable for indoor and outdoor use.
Adjustable Proximity Range:	The detection range can be adjusted between 3-12 cm, ensuring stable and customizable operation.
Flexible Door Control:	Door opening time can be set from 0.5 to 20 seconds, with options for trigger or toggle mode output.



Touch-Free Operation

Activates without physical contact for improved hygiene.

Durable Construction

Made from SUS304 stainless steel, resistant to corrosion and wear.

Flexible Door Control

Adjustable door open time from 0.5 to 20 seconds

Waterproof Design

IP65-rated, suitable for both indoor and outdoor use.

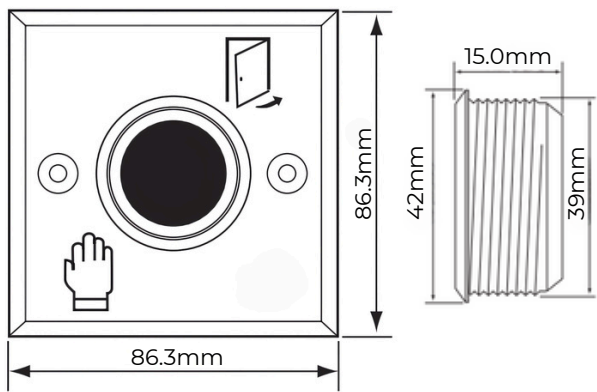
Adjustable Proximity Range

Detection range can be adjusted between 3 to 12 cm.

Long Life Span

Infrared sensor has a lifetime of 100,000 hours.

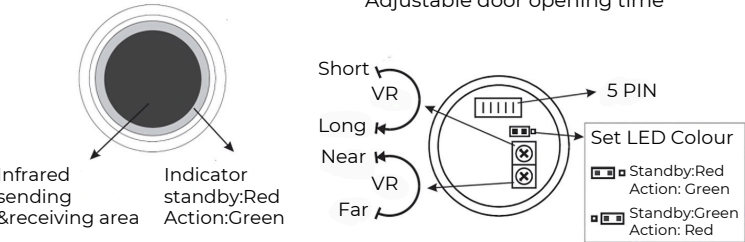
Dimension



(Front)

(Back)

Adjustable door opening time

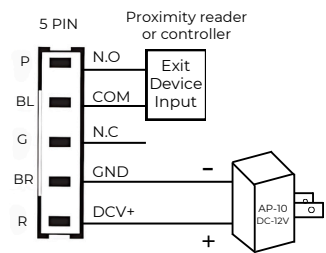


5 PIN:

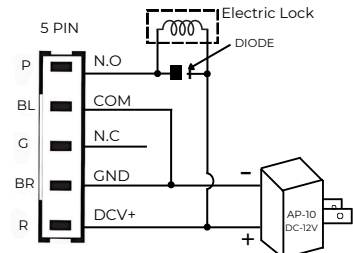
P	Door Controller relay.(N.O)
BL	Door Controller relay.(COM)
G	Door Controller relay.(N.C)
BR	GND
R	DC+12V-24v

Examples Of Wirings

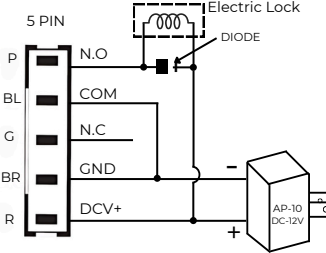
A. Controller door Opening



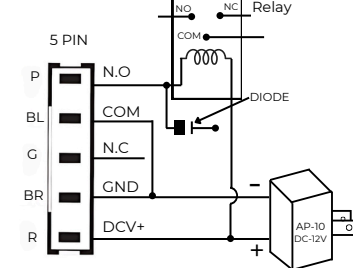
B. Fail Secure type electronic lock



C. Fail Safe type electronic lock



D. Connect Relay (power > DC30V or Current>1A)



Application:

- Suitable for use in access control systems for public areas such as hospitals, restaurants, and other locations requiring touch-free operation.
- Can also be used for auto control detection and access points where hygiene and durability are priorities.

Specification

Model Number:	EX-201
Power Input:	DC12V – DC24V $\pm 10\%$
Proximity Range:	Adjustable from 3 to 12 cm
Output Load:	1A @ 30V DC (Max)
Output State:	Trigger State (0.5 to 20 sec), Toggle Mode Output
Infrared Sensor Lifetime:	100,000 hours
Relay Mechanical Life Span:	1,000,000 cycles
Standby Indicator:	Red
Active Indicator:	Green
Current Consumption:	Max 45mA @ DC24V
Dimensions:	38mm